

MP600-MP660E

Since 1994 Marapco Generating Sets have provided reliable, dependable and trustworthy power solutions for the global market. Marapco Generating Sets combine quality and performance to deliver a superior product, making Marapco a market leading Generating Set throughout the Middle East, Asia & Africa.

Generator Output Rating at - 50Hz

380-415V	KVA	KW
Prime	600.0	480.0
Standby	660.0	528.0

@ 0.8 p.f.

Generator Output Rating at - 60Hz

480V	KVA	KW
Prime	625.0	500.0
Standby	660.0	528.0

@ 0.8 p.f.

Engine Data

Engine Manufacturer:	Perkins UK
Engine Model:	2806A-E18TAG1A
Number of Cylinders:	6
Cylinder Arrangement:	Vertical In Line
Cycle:	4 Stroke
Bore/Stroke mm (in):	145.0 (5.7) / 183.0 (7.2)
Induction:	Turbo charged & air - to- air Charge cooled
Compression ratio:	14.5:1
Displacement I (cu.in):	18.13 (1106)

General Data

	Liter	US/Gal
Fuel Tank Capacity:	1250.0	330.2
Fuel Tank:	Powder Coated Steel	
Base Frame:	Heavy Duty-Powder Coated	
Control Panel:	Deep Sea Electronics 6110	
Circuit Breaker:	ABB 3 Pole MCCB	

Performance

	50Hz		60Hz	
Engine Speed:	1500		1800	
Gross Engine Power:	<i>kWm</i>	<i>Bhp</i>	<i>kWm</i>	<i>Bhp</i>
<i>Prime:</i>	540.0	724.0	567.7	761.3
<i>Standby:</i>	593.0	795.0	623.0	835.4
Fuel Consumption:	<i>L/Hr</i>	<i>US Gal/Hr</i>	<i>L/Hr</i>	<i>US Gal/Hr</i>
<i>Prime:</i>	123	32.49	127	35.55
<i>Standby:</i>	134	35.40	141	37.25

Standard Reference Conditions:

Output ratings are presented at normal conditions of temperature and pressure. This generator set is designed to operate in high ambient temperatures and altitudes.

Please consult your dealer for specific site ratings.

Dimensions and Weights

Length		Width		Height		Dry		Wet	
Millimeter	Inch	Millimeter	Inch	Millimeter	Inch	KG	LB	KG	LB
3919.0	154.3	1536.0	60.5	2229.0	87.8	4362.0	9616.6	4470.0	9854.7

* With Lube Oil

* With Lube Oil & Coolant

Marapco Ltd

8 Meadowbank Rd - Carrickfergus - N. Ireland - U.K. BT38 8YF
Tel: +44 (0) 2893 355674 - www.marapco.com - Email: sales@marapco.com

Rating Definition

P Prime Rating

These rating are applicable for supplying continuous electrical power (at variable load) in lieu of commercially purchased power. This model can supply 10% overload power for 1 hour in 12 hours.

S Standby Rating

These rating are applicable for supply continuous electrical power (at variable load) in the event of utility power failure. No *overload is permitted on these ratings*. The alternator model is peak continuous rated (as defined in ISO 8528-3)

Air Flow

50 Hz

60 Hz

	M ³ /min	Ft ³ /min	M ³ /min	Ft ³ /min
Combustion Air Flow:	34.0	1201	43.0	1519
Exhaust Gas Flow:	96.0	3390	109.0	3849
Radiator Cooling Air Flow:	606.0	21401	762.0	26910

*Cooling system designed to operate in high ambient conditions

Alternator Data

Alternator Manufacturer: Leroy Somer

Alternator Model: LSA 47.2 L9

Number of Bearings: Single (1)

Insulation Class: H

Total Harmonic Content: <2.00%

Wires: 12

Ingress Protection Rating: IP 23

Excitation System: Shunt

Winding Pitch Code: 2/3 - 6S

Principles



Perkins manufactures diesel engines and power solutions to the highest levels of performance and reliability. MARAPCO incorporates this engine throughout their full range.

Diesel Power



Leroy Somer is a world leader in the manufacturing of power generation, combining quality with performance to produce a market leading alternator for MARAPCO.



Deep Sea Electronics control modules deliver unrivaled functionality and performance. MARAPCO generating sets use this latest technology to its full potential.

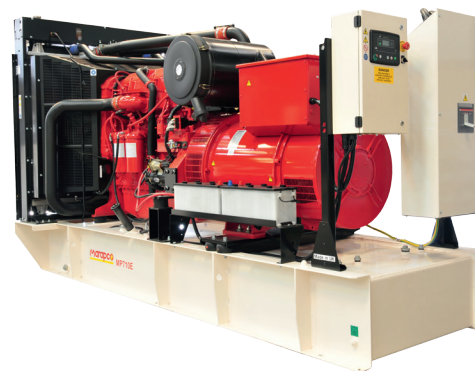
Cooling & Lubrication

50 Hz

60 Hz

	Liter	US/Gal	Liter	US/Gal
Coolant Capacity:	61.0	16.1	61.0	16.1
Lube Oil Capacity:	62.0	16.4	62.0	16.4

	°C	°F	°C	°F
Exhaust Temperature:	568	1054	481	898



Other Information

Generating Set Standards

This generating set meets the following standards: ISO8528, BS4999, BS5514, IEC60034, VDE0530

Warranty

This generator is covered against manufacturing and workmanship defects. Kindly refer to warranty statement for more details.

Picture shown in leaflet may include optional accessories

Distributed & Serviced by:



JUBAILI BROS

Logos and Brands of Perkins, Leroy Somer, ABB & Deep Sea Electronics are Registered Trademarks

Marapco Ltd

8 Meadowbank Rd - Carrickfergus - N. Ireland - U.K. BT38 8YF

Tel: +44 (0) 2893 355674 - www.marapco.com - Email: sales@marapco.com